

BOCCHI®

LUGANO 2.0

PULL-DOWN KITCHEN FAUCET



Product Code

2025 0001 XX

FEATURES:

- 35 mm ceramic disc valve cartridge
- Cartridge working life: >500,000 times
- Lead-Free faucet body, contains $\leq 0.25\%$ total lead content by weighted volume
- Maximum flow rate = 1.8 gpm (6.8 l/min) at 72 psi
- Spout swivels 360°
- Standard or Needle Spray with weighted shower hose
- 90° forward handle
- Includes flexible inlet hoses, each 24"
- Stabilizer flange included
- Extended 3.5 in shank

WEIGHT: 4.0 lbs

AVAILABLE FINISHES:

- CH - Chrome
- SS - Stainless Steel
- MB - Matte Black
- BG - Brushed Gold

DIMENSIONS:

Spout length = 9.1 in (230.3 mm)
Spout height = 10 in (254.8 mm)
Overall Faucet height = 18.3 in (466.1 mm)

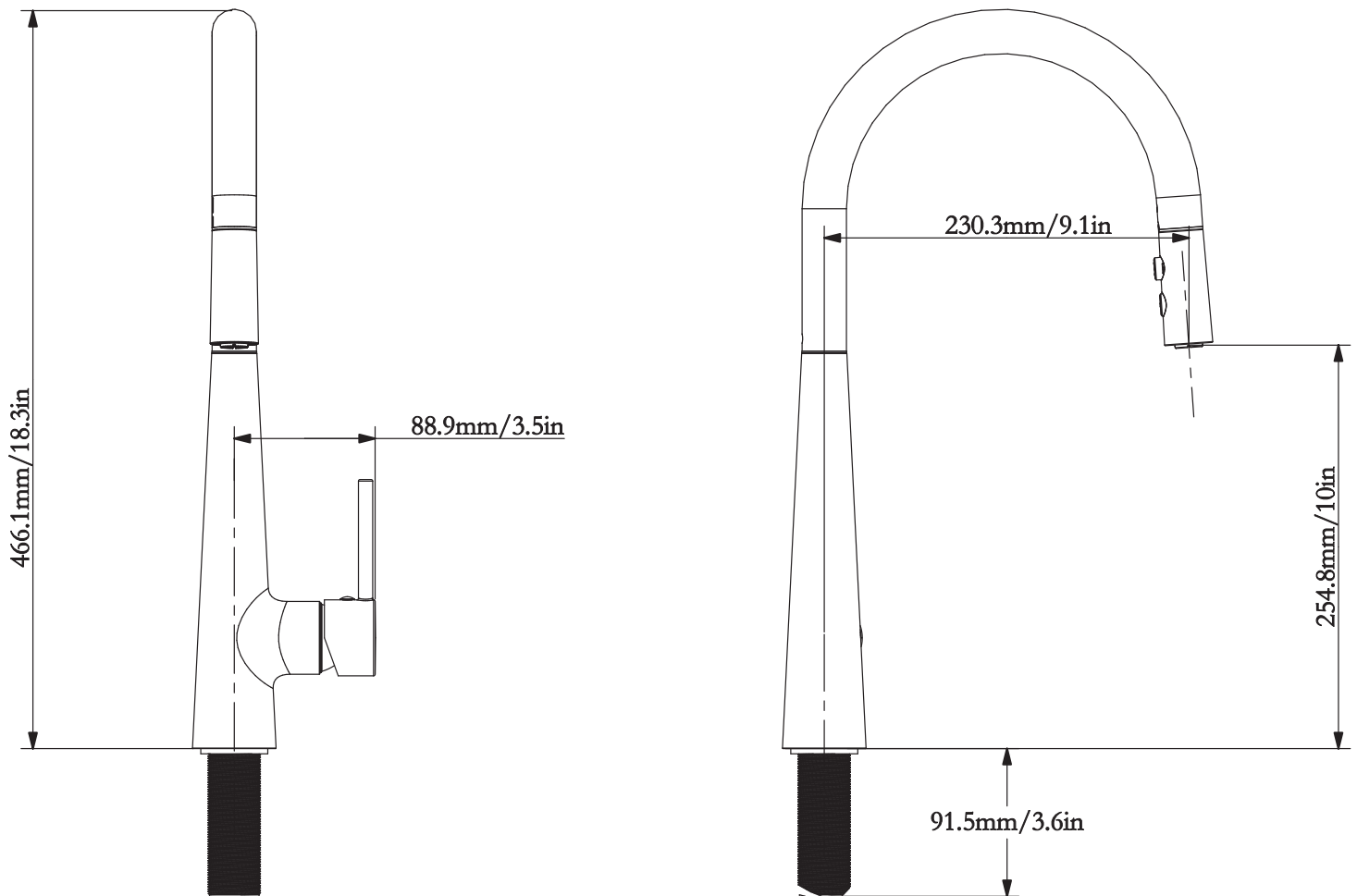
OPTIONAL ACCESSORIES:

- 2180 0003 - Contemporary Deck Plate
- 2180 0004 - Traditional Deck Plate
- 2340 0005 - Lesina Soap Dispenser
- 2340 0006 - Tronto 2.0 Soap Dispenser

CODES / STANDARDS:

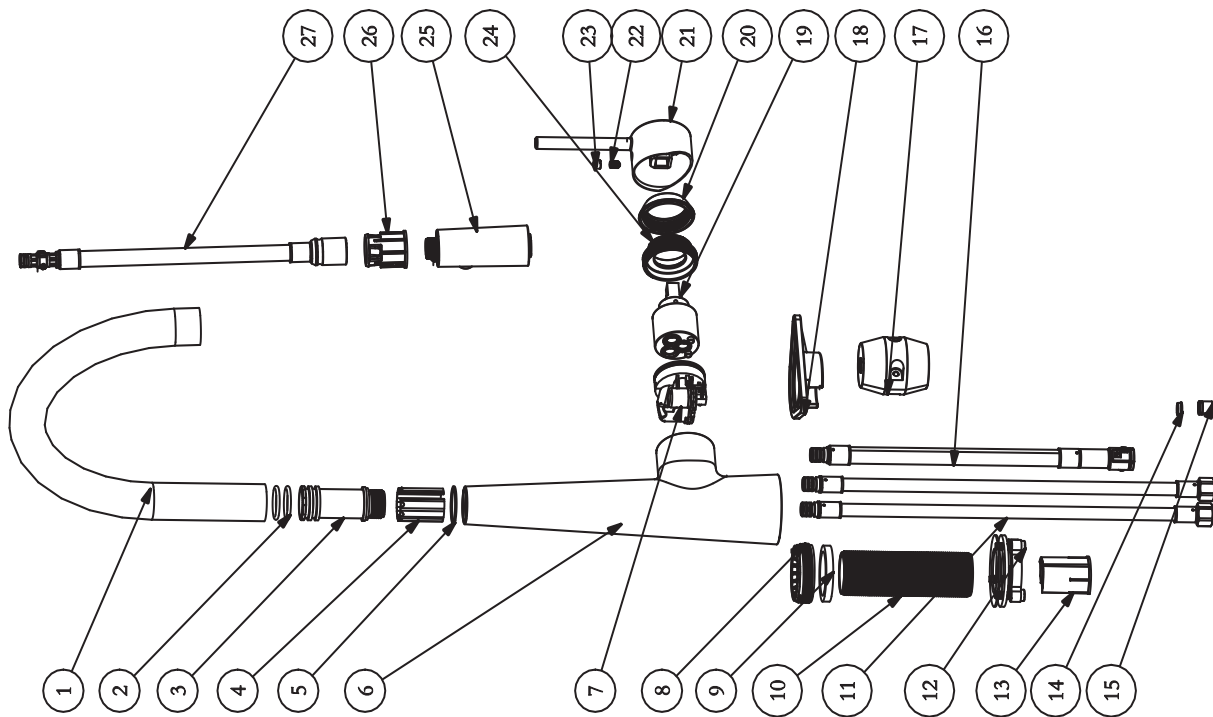
ASME A112.18.1 / CSA B125.1 / NSF 61 / NSF 372 / AB1954 / DOE - Energy Policy Act 1992 / CEC - California Energy Consumption / Meets CalGreen requirements for kitchen faucets

BOCCHI®



IMPORTANT: These measurements are subject to change or cancellation. No responsibility is assumed for use of superseded or voided pages. BOCCHI reserves the right to make revisions without notice to product specifications.

BOCCHI®



NO.	DWG.NO.	NAME	MATERIAL	QTY
27	999910060801	Pull-down Hose Assembly	TPE+PA	1
26	121010471058	Gasket	POM	1
25	121111141027	Sprayer	ABS	1
24	999910101326	Nut	HPb57-3	1
23	999910101773	Red and Blue Cap	SIL	1
22	C5X8X03M	Screw	SUS302	1
21	121011431011	Handle	Zinc Alloy	1
20	121010211002	Decorative Cover	ABS	1
19	F35X55_6X04	Cartridge Assembly	POM	1
18	113110411013	Washer	POM_CF2001	1
17	999910101762	weight	Iron	1
16	999910061139	Outlet Hose Assembly	TPE+PVC	1
15	N10X10_5X03	Check valve group	PP	1
14	121010481019	Flow Regulator	POM	1
13	121010481009	Gasket	POM/M90	1
12	121010221021	Accessories bag	Aluminium Alloy	1
11	999910060483	Inlet Hose Assembly	SUS304+PVC	2
10	121010481008	Mounting threaded pipe	Aluminium Alloy	1
9	121010281001	Washer	EVA	1
8	121010211001	Nut	PA66+30%GF	1
7	121010521011	Cartridge Seat	PPA+50%GF	1
6	121010511025	Body	Zinc Alloy	1
5	121110131011	Washer	POM	1
4	121010471040	Gasket	POM	1
3	121010211015	Spindle	Aluminium Alloy	1
2	R20_3X2_62	O-RING	EPDM	2
1	999910101708	Spout	SUS304	1

IMPORTANT: These measurements are subject to change or cancellation. No responsibility is assumed for use of superseded or voided pages. BOCCHI reserves the right to make revisions without notice to product specifications.